



Pedelec Assembly Guide

Version 2 ~ 18/01/2012



Cycloboost
7 rue Mireport
33310 LORMONT

Web www.cycloboost.com
Support support@cycloboost.com

This document is the intellectual property of Cycloboost©. All copyright is forbidden without written authorization of the author.

Copyright © 2009-2012 Cycloboost – All rights reserved

Table of contents

1 . Before beginning.....	2
1 - Technical support	2
2 - Guarantee, sending back and after-sales service.....	2
3 - How to report an anomaly.....	2
2 . Assembling the Pedelec.....	3
1 - Checking the compatibility with your bike.....	3
2 - Disassembly of the left crank.....	3
3 - Assembling the Pedelec.....	4
4 - Putting back the crank.....	5
5 - Fixing the cable.....	5
6 - Connecting the controller.....	5
3 . Test of the assembly.....	5
4 . Anomalies.....	5
5 . APPENDIX – Possible failures.....	6
1 - The bike does not start, the controller is mute, no bip.....	6
2 - The controller utters 2 bips.....	6
3 - Other failures.....	6

1 . Before beginning

1 - *Technical support*

In spite of all our efforts, there may still be some technical information difficult to understand. Cycloboost is at your disposal to make it clearer and to guide you if you need it :

You can contact us @ support@cycloboost.com

2 - *Guarantee, sending back and after-sales service*

Cycloboost's technical service is at your disposal to answer all questions related to :

- the dysfunctionning of one of the elements of the kit or battery
- the return of the material
- the after-sales service

3 - *How to report an anomaly*

Before reporting to the after-sales service, please check the wiring as well as the charging state of the battery.

If the anomaly remains, send an e-mail to the after-sales service @ support@cycloboost.com with the following information :

- Your name
- Your invoice number
- The serial number of your motor, controller of battery
- The precise description of the failure : how it happened (while cycling, at a standstill, at the start, while charging the battery, while braking, while speeding up ...)
- The tests or handlings you made

2 . Assembling the Pedelec

1 - Checking the compatibility with your bike

The Pedelec is compatible with most bikes.

- Example of compatible chainsets (with internal bearings) :



- Example of incompatible chainset (with external bearings) :



2 - Disassembly of the left crank



Remove the protection cap

Unscrew the bolt

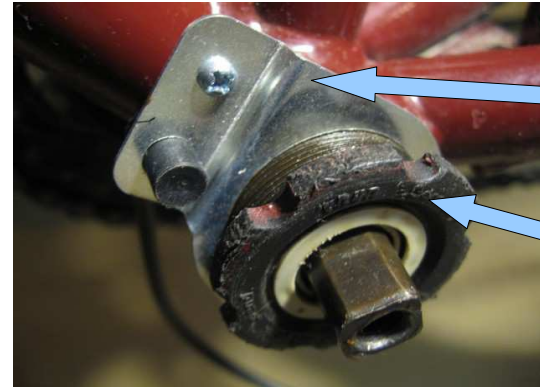


Now you need to remove the crank...



Screw the **crank extractor** then remove the crank

3 - Assembling the Pedelec



Put the sensor of the Pedelec like this

Screw the washer holding the chainset

Unscrew the washer holding the chainset

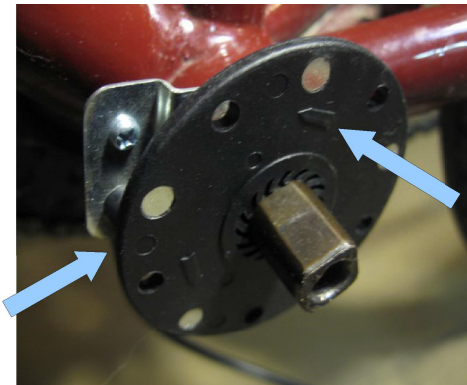


Here is what you should get



The chainset is ready to get the Pedelec

Check the gap between the sensor and the magnet : **maximum 3mm**



Put the washer holding the magnets on the chainset axis.

Respect the direction of rotation (see black arrow on the washer)

Check the gap between sensor and magnets : max 5mm

4 - Putting back the crank

Put back the crank and screw the bolt



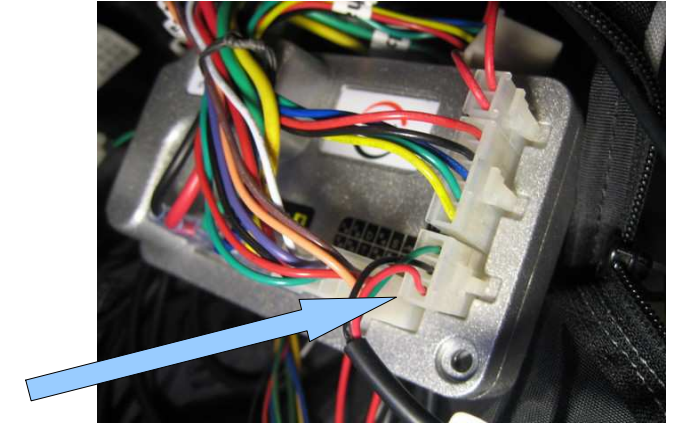
Put back the protection cap

5 - Fixing the cable

Fix the cable of the Pedelec along the frame until the controller with tightening clamps.

6 - Connecting the controller

Connect the Pedelec here



3 . Test of the assembly

To make this test, you need to try the bike. After a few minutes, the Pedelec should progressively interlock and speed up if you go on pedalling.

The Pedelec function stops if you brake or if you speed up with the twist or thumb throttle.

4 . Anomalies

If your assembly does not work, check the following points :

- Check the wiring of the Pedelec at the level of the controller
- Make sure the direction of rotation has been respected during the assembly
- Check the gap between the Pedelec and the magnets : max 5mm
- Make sure the battery is properly connected
- Make sure the motor works with the throttle

If, despite all this, the Pedelec does not work, please get in touch with the after-sales service (see chapter 1),

5 . APPENDIX – Possible failures

1 - **The bike does not start, the controller is mute, no bip**

- Check the connections at the controller. Some connections may not be pushed in properly
- Check the connections at the level of the battery
- Check the fuse (if there is one) and replace it if needs be
- Check the connection of the electric brakes (see below to correct it)

2 - **The controller utters 2 bips**

Check the connection of the Hall sensor (6 pins white plastic connector).

When the controller detects a damaged Hall sensor in the motor, he utters 2 bips, then enters automatically in save mode (without control of the Hall sensor).

Turn the crank to start the motor.

It may be necessary to pedal to start the motor if it does not start immediately.

Contact the after-sales service, see chapter 2,3.

3 - **Other failures**

- Failures of the braking security :

Disconnect the electric brakes (**BLUE** connector), report the problem to the after-sales service, see paragraph 5.2.

- Unknown anomalies :

If the electric assistance of your bike does not work (unknown reason), you can try to force the controller into save mode:

- Keep both brake levers tightened
- Push the cruise control's red button 5 times

You will hear a loud bip.

Then, you can cycle with your bike at half its maximum speed by pushing the red button of the cruise control.

To come back to normal, you must disconnect and connect the battery when the problem is solved.

END OF DOCUMENT
