



Use Guide for freewheels 7, 8 and 9 speeds

Version 1 ~ 19/06/2013



This document is the intellectual property of Cycloboost©. All copyright is forbidden without written authorization of the author.

Copyright © 2009-2012 Cycloboost – All rights reserved

Table of contents

1 . Introduction.....	4
2 . Preparation of the freewheel.....	4
3 . Putting the freewheel in place.....	5
4 . Putting the washers.....	6
5 . End of the preparation.....	7

1 . Introduction

We are going to present the installation of a **9-speeds freewheel** (11/32 prongs) on a **Smart Pie motor**.

It is exactly the same process for all other motors (and all other freewheels 7 and 8-speeds) if the final gap between the 2 forks enables the installation.

It is possible to spread the seat stays a few millimeters with no danger (**up to 140mm**) for the use of the bike. **It can be more on some frames.**

2 . Preparation of the freewheel

For 9-speeds freewheels, you need to file the end like this to get maximum space :



This operation is not necessary on other freewheels.

3 . Putting the freewheel in place

For Smart Pie motors, put first the strut supplied with all rear motors. This strut is not necessary with these freewheels for other motors.

There is no need for a specific tool to screw the freewheel, you just need to do it by hand. Pedalling will automatically tighten the freewheel.



4 . Putting the washers

Put 2 thick washers supplied with the motor like this :



Here is the result :

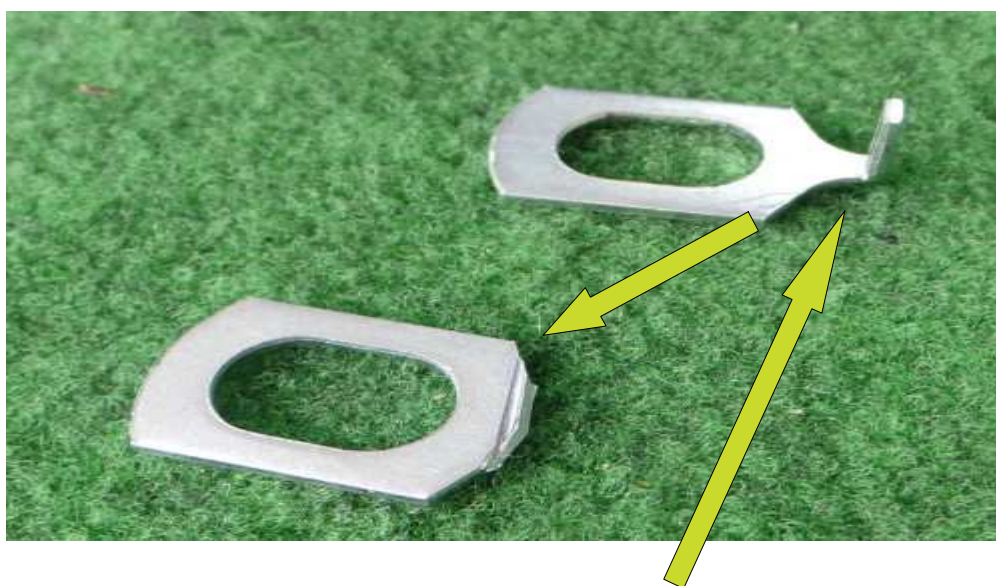


The second washer **must slightly be bigger** than the freewheel, it will press against the frame of the bike (seat stays) and will not prevent the freewheel from turning.



5 . End of the preparation

On the other side of the motor, you can put a thin washer (supplied with all our motors) :



To make the installation easier, you need to cut the stop.

Here is the washer in its place :



Preparation is over, you can put the motor on your bike according to the installation guide.

END OF DOCUMENT
